

# T8 Ballast - Easy Retrofit LED Tube

(UL, DLC Listed)



## Features

Quick to Install: Just remove the existing lamps and direct wire the light fixture.

High efficiency Energy Savings over 40-50% when compared to existing fluorescent T12/T8 ballasted fixture applications.

Expanded light distribution angle of 180 degrees, also 300 degrees available.

Excellent for low temperature applications, save energy cost for air condition system.

Triac Dimmable Available. (optional)

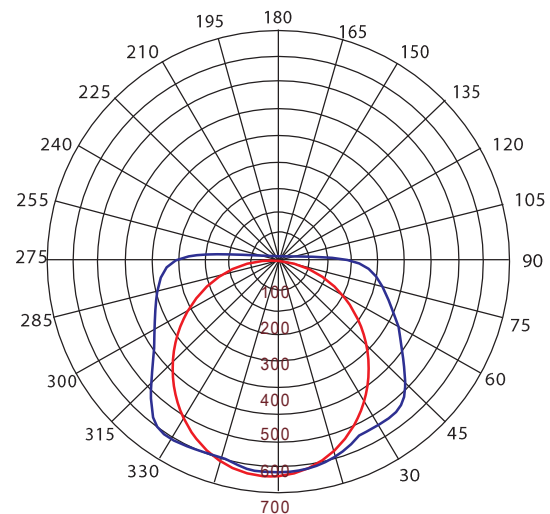
Super long life, up to 50,000 hrs, still keep up to 90% lumen.

No glass or mercury for safer work environments

Tube efficiency upto 115-120 lumen, 150 Lumen per watt as option available.

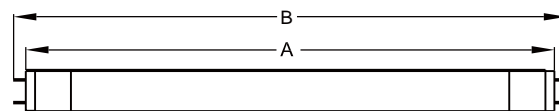
5 years Warranty.

## Distribution Curve Flux

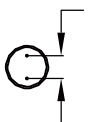


— C0-C180 — C90-C270 — CKL-T8-18W

## Dimensions



9W: A=589mm  
18W: A=1198mm  
36W: A=2398mm



## Specifications:

Item	Power	Efficacy (lm/W)	Lumen	Rated Voltage	Length (mm)	Color Temp.(K)	Socket	PF	Cover	Beam Angle	Warranty (Years)
IER-T806-09WA1- Direct wire)	9W	115-120	1035-1080	120-277V (50/60Hz)	600mm	5K	G13	0.95	Milky Clear	180° 300°	5
IER-1218D-5000K SRPSB	18W	115-120	2070-2160	120-277V (50/60Hz)	1200mm	5K	G13	0.95	Milky Clear	180° 300°	5
IER-1222D-5000K	22W	115-120	2530-2640	120-277V (50/60Hz)	1200mm	5K	G13	0.95	Milky Clear	180° 300°	5
IER-T824-36W Not DLC Listed	36W	115-120	4140-4320	120-277V (50/60Hz)	2400mm	5K	G13	0.95	Milky Clear	180° 300°	5

Note: Standard CCT for stock is: 5000K, other CCT MOQ is: 1000 pcs.

# High Lumen Light Emitting Diode 2', 4' Easy Retrofit T8 LED Tube Series



Item	Power	Efficacy (lm/W)	Lumen	Rated Voltage	Length (mm)	Color Temp.(K)	Socket	PF	Cover	Beam Angle	Warranty (Years)	Material / Packing info.
												L*W*H(mm)
IER-1212D-5000K SRPSB	12W	150-155	1800-1860	120-277V (50/60Hz)	1200mm	4K/5K	G13	0.95	Milky Clear	300°	5	PC/Aluminum 383x391x1280mm/25pcs
IER-1218D-5000K SRPSB	18W	150-155	2700-2790	120-277V (50/60Hz)	1200mm	4K/5K	G13	0.95	Milky Clear	300°	5	PC/Aluminum 383x391x1280mm/25pcs
IER-1222D-5000K	22W	150-155	3300-3410	120-277V (50/60Hz)	1200mm	4K/5K	G13	0.95	Milky Clear	300°	5	PC/Aluminum 383x391x1280mm/25pcs

No More T12 or T8 Fluorescent Lamp, and Relamping with below T8 easy retrofit Tube, all is



Existing Electronic Ballast



## Occupancy Sensor / Dimmable System Options

### Self Ballast T8 LED Tube

Model: IER-009-018W IIG13

Production Type:

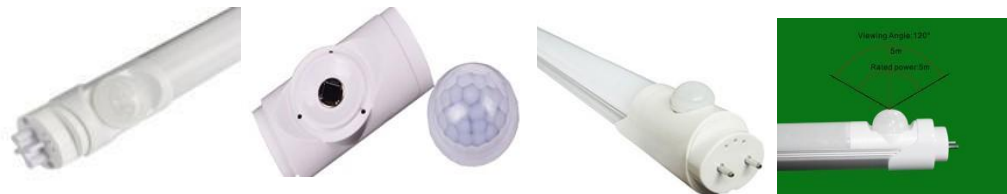
Power: 9w-18w

Voltage: AC85-277V

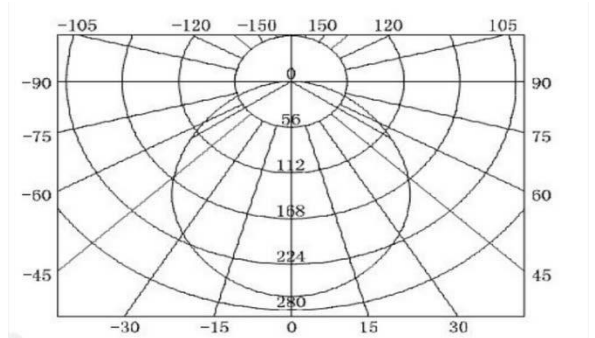
- Infrared control, detect the temperature intelligently adjust the working status automatically.
- Low power consumption in standby static, when people approach
- Adjust to full load automatically.
- Standby Power: 3W, 0% ~100% adjustable
- Delaytime: 16S (16'sto 3min adjustable)
- Detection Area: Dia4-5M

#### Application:

Supermarket, office building, shopping malls  
Exhibition halls, school, hospital  
advertisement lighting and decoration



### Distribution Curve Flux



### Dimmable LED Tube

Model: IER-T5/T8

Production Type:

Power: 9w-23w

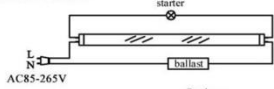
Voltage: AC85-277V



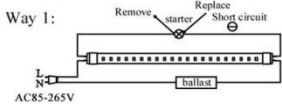
### T8 Installation

Single End Input

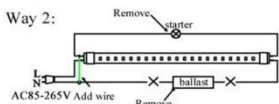
1. Inductive fixture



Traditional fluorescent tube with inductive fixture



1). Remove FL tube, replace starter with enclosed fuse, mount single-end input LED tube.



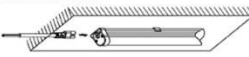
2). Remove FL tube and starter, take out the magnetic ballast, have the line re-connected for one end power input and then mount single-end input LED tube

### T5 Installation

1. Single installation:



2. Wire connection:



Use the plug with wire, connect the tube to power.

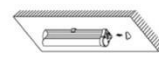
3. Series connection:



Connect 2 tubes by the connector with 2 hole ends.

Install the tube on the wall or ceiling.

Tube Power	8W	12W	18W/20W
Installation distance(L)	250-400mm	500-700mm	700-1000mm



Use the plastic cover to another end, make sure it's insulated.



10pcs of tubes can be connected together at most.

### Distribution Curve Flux

